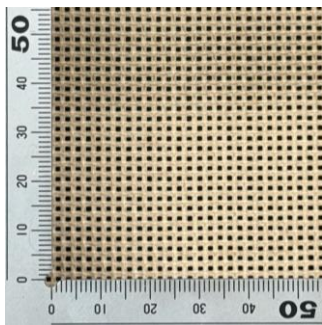


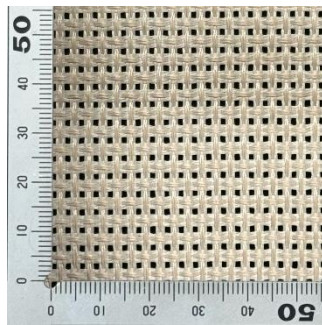
Gタイプメッシュベルト

製品番号	原反幅 (mm)	呼び厚 (mm)	最大長 (m)	開口率 (%)	質量 (g/m ²)	引張強さ(N/cm)	
						縦	横
BGF-410-18	2300	0.55	100	14.1	485	520	740
BGF-410-20	2000	0.75	100	10.0	630	840	570
BGC-410-20 (静電防止タイプ)	1020	0.75	100	11.3	670	900	620
BGN-410-20	3000	0.75	100	10.4	615	1150	850
BGF-410-30	3830	0.95	100	51.2	470	350	440
BGB-410-30 (静電防止タイプ)	3830	0.95	100	54.9	505	410	760
BGC-410-30 (静電防止タイプ)	1300	0.95	100	57.2	530	460	570
BGF-410-30 (横糸強度UP品)	3840	0.95	100	44.7	570	490	1470

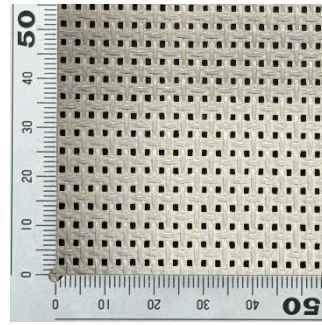
※上表中の数値は測定値であり、規格値ではありません。



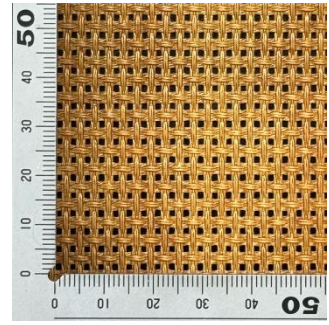
BGF-410-18



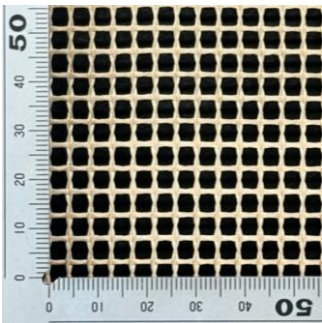
BGF-410-20



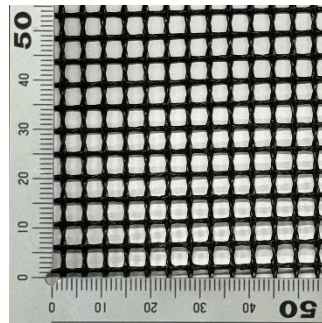
BGC-410-20
(静電防止タイプ)



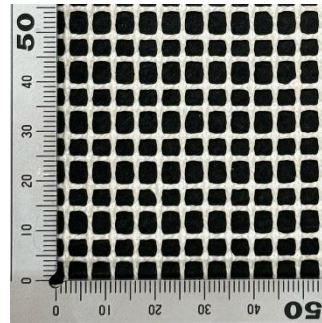
BGN-410-20



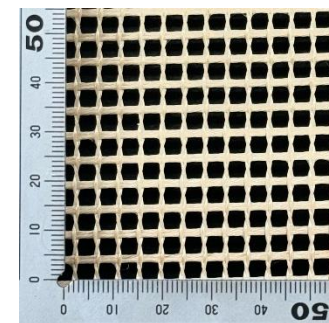
BGF-410-30



BGB-410-30
(静電防止タイプ)



BGC-410-30
(静電防止タイプ)

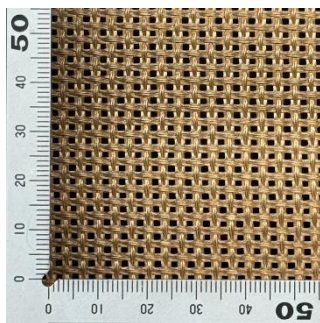


BGF-410-30
(横糸強度UP品)

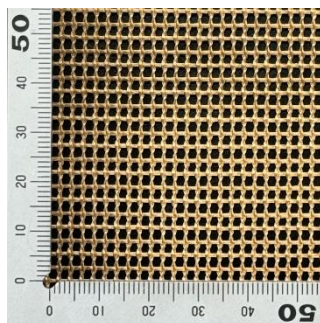
《 Aタイプメッシュベルト

製品番号	原反幅 (mm)	呼び厚 (mm)	最大長 (m)	開口率 (%)	質量 (g/m ²)	引張強さ(N/cm)	
						縦	横
BAF-410-20	1000	0.8	100	45.1	385	1740	1940
BAF-410-23	1500	0.9	50	38.1	377	1210	1850
BAF-410-25	2800	0.8	100	45.0	290	1140	1890
BAF-410-30	2100	1.1	100	52.8	415	1100	1200
BAF-410-31	1500	1.0	80	21.6	550	1810	1930
BAF-410-32	3000	0.8	50	54.9	253	520	700
BAF-407-20	2500	0.5	50	18.4	330	720	680
BAF-407-24	2800	0.6	50	27.4	600	1200	1000

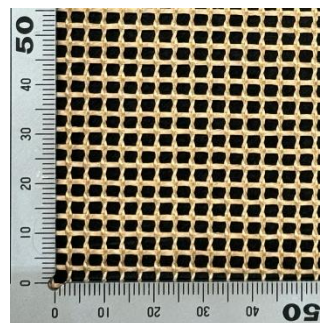
※上表中の数値は測定値であり、規格値ではありません。



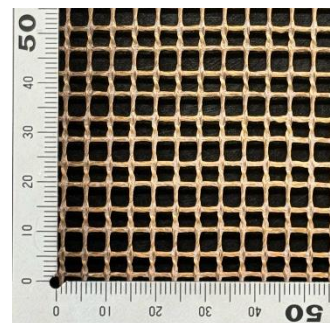
BAF-410-20



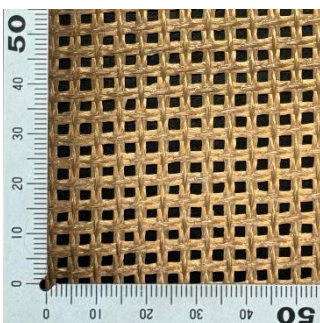
BAF-410-23



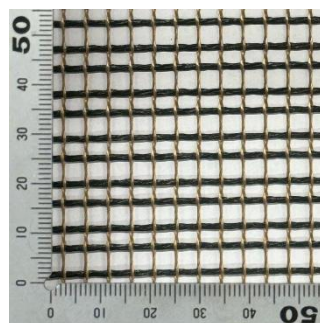
BAF-410-25



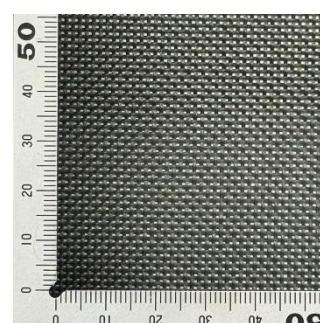
BAF-410-30



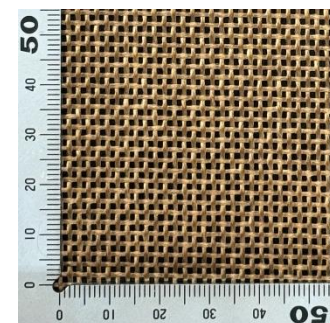
BAF-410-31



BAF-410-32



BAF-407-20



BAF-407-24